

FLEXFIT[®]
YUPOONG

FALL / WINTER 2017



CURVED

110	FITTED SNAPBACK	8
110P	COOL & DRY MINI PIQUE	10
180	FLEXFIT DELTA	16
6195P	FLEXFIT PINSTRIPE	18
6196	FLEXFIT GLEN CHECK	20
6197	FLEXFIT TARTAN PLAID	22
6245CD	LOW PROFILE CORDUROY DAD CAP	24
6245CM	LOW PROFILE COTTON TWILL	26
6245CW	LOW PROFILE CAMO WASHED CAP	28
6245DC	LOW PROFILE DESTROYED CAP	30
6245 HC	HONEYCOMB DAD CAP	32
6245MW	LOW PROFILE MEDLTON WOOL DAD CAP	34
6245PT	PEACHED COTTON TWILL DAD CAP	36
6245SC	LOW PROFILE SATIN CAP	38
6245VC	LOW PROFILE VELOURS CAP	40
6245W	LOW PROFILE WASHED CAP	42
6245WR	LOW PROFILE WATER REPELLENT CAP	44
6277	FLEXFIT WOOLY COMBED	46
6277CA	CARBON FLEXFIT	48
6277FM	FINE MELANGE FLEXFIT	50
6277FV	FLEXFIT FLAT VISOR	52
6277HM	HERINGBONE MELANGE FLEXFIT	54
6277JK	FLEXFIT JACQUARD KNIT	56
6277LW	LOW PROFILE LIGHT WOOLY CAP	58
6277ML	MELANGE FLEXFIT	60
6277MS	FLEXFIT PASTEL MELANGE CAP	62
6277PS	PLAIN SPAN FLEXFIT	64
6277Q	DIAMOND QUILTED FLEXFIT	66
6277SM	STRIPES MELANGE FLEXFIT	68
6277TF	TECH FLEXFIT	70
6277TK	TWILL KNIT FLEXFIT	72
6277UT	UNSTRUCTURED TECH FLEXFIT	74
6355	FLEXFIT MELANGE CAP	76
6363V	BRUSHED COTTON TWILL MID-PROFILE	78
6560	FLEXFIT 5 PANEL	80
6580W	FLEXFIT PERFORMANCE	82
6588	FLEXFIT BAMBOO	84
6745	FLEXFIT COTTON TWILL DAD CAP	86
6777	FLEXFIT ATHLETIC MESH	88
6778	FLEXFIT DOUBLE JERSEY	90
6778T	FLEXFIT DOUBLE JERSEY 2-TONE	94
6977CA	FLEXFIT GARMENT WASHED CAMO	96

6997	FLEXFIT GARMENT WASHED COTTON DAD HAT	98
7706	CURVED CLASSIC SNAPBACK	100
7706BS	CURVED BANDANA TIE SNAPBACK	102
8110	110 VISOR	104

FLAT VISOR

6007	CLASSIC 5 PANEL SNAPBACK	106
6007T	CLASSIC 5 PANEL SNAPBACK	108
6089BS	BANDANA TIE SNAPBACK	110
6089CA	CARBON SNAPBACK	112
6089CH	CHAMBRAY-SUEDE SNAPBACK	114
6089CO	CORK SNAPBACK	116
6089CV	CAMO VISOR SNAPBACK	118
6089F	FLORAL SNAPBACK	120
6089FL	FULL LEATHER IMITATION SNAPBACK	122
6089HW	HAWAIIAN SNAPBACK	124
6089M	CLASSIC SNAPBACK	126
6089MT	CLASSIC SNAPBACK 2-TONE	128
6089ML	MELANGE 2-TONE SNAPBACK	130
6089PV	PAINTED VISOR SNAPBACK	134
6089Q	DIAMOND QUILTED SNAPBACK	138
6089R	ROSES SNAPBACK	140
6089SC	STRIPES MELANGE CROWN SNAPBACK	142
6089SP	SUNSET PEAK SNAPBACK	144
6089WR	WATER REPELLANT SNAPBACK	146
6210	PREMIUM 210 FITTED	150
6210T	PREMIUM 210 FITTED 2-TONE	152
6502	UNSTRUCTURED 5-PANEL SNAPBACK	154
6508	PREMIUM CORDUROY SNAPBACK	156
6689M	MELTON WOOL SNAPBACK	158

BUCKET HAT

5003	FLEXFIT COTTON TWILL BUCKET HAT	162
------	---------------------------------	-----

BEANIES

1500KC	HEAVYWEIGHT BEANIE	164
1501KC	HEAVYWEIGHT LONG BEANIE	166

JOCKEY

7005	CLASSIC JOCKEY CAP	168
------	--------------------	-----

TRUCKER

6005FF	FOAM TRUCKER	170
6005FW	FOAM TRUCKER WITH WHITE FRONT	172
6006	CLASSIC TRUCKER	174
6006T	CLASSIC TRUCKER 2-TONE	176
6006W	CLASSIC TRUCKER	178
6180	FLEXFIT DRIVER	180
6311	FLEXFIT MELANGE MESH	182
6511	FLEXFIT MESH TRUCKER	184
6511CF	FLEXFIT MESH COLORED FRONT	186
6511T	FLEXFIT MESH TRUCKER 2-TONE	188
6533	FLEXFIT TACTEL MESH	190
6606	RETRO TRUCKER	192
6606CF	RETRO TRUCKER COLORED FRONT	194
6606T	RETRO TRUCKER 2-TONE	196

ACCESSOIRES

FF-004	FLEXFIT SLATWALL SHELVES	198
FF-005	FLEXFIT SLATWALL HOOKS	198
FF-006	FLEXFIT MULTI DISPLAY	198
FF-007	FLEXFIT SLATWALL HOOKS	198
FF-008	CAPRACK 18 SYSTEM	202
FF-009	CAPRACK 36 SYSTEM	203
FF-010	CAPRACK PRO SYSTEM	204
FF-011	CAP CARRIER	200
FF-012	CAP WASHER	201

Headwear designer and manufacturer in Korea since 1974. YUPOONG is above all a legend, that of a prestigious company whose products have been used by world leading brands of the 21st century and have been acknowledged as the "EPITOME OF REFINEMENT". It is also the combination of unique craftsmanship and the highest standards of quality which has gained us an impeccable reputation as the leading headwear producer in the world.

We have given birth to 4 unique styles of caps and named these FLEXFIT, 110, 210 FITTED, THE CLASSICS YUPOONG. In the following pages, FLEXFIT EU HUB invites you to discover its new range of caps developed under our own brand names. From Classic styles to the very latest, we are focusing on bridging the art of fashion and develop an emotional connection with the consumers. As part of this programme, we also offer custom designs that can be made using the same design properties. We hope you will join us in experiencing this whole new range of the next generation of headwear.

Flexfit has developed an image which is identified as uniquely amazing, no other cap in the world has been engineered to such precision. With its unique patented characteristics including Permacurve, we've created a comfortable cap that fits any head size but maintains the integrity and classic structure of a fitted cap. This, as you probably can tell, offers the wearer the best of both worlds.

When selecting YUPOONG family products you are making a statement of your passion for quality.

SIZE CHART

HEAD SIZE

INCHES	20	20 3/8	20 3/4	21 1/4	21 5/8	22	22 3/8	22 3/4	23 1/8	23 1/2	23 7/8	24 1/4	24 5/8	25
CM	51	52	53	54	55	56	57	58	59	60	61	62	63	64
SIZES	6 3/8	6 1/2	6 5/8	6 3/4	6 7/8	7	7 1/8	7 1/4	7 3/8	7 1/2	7 5/8	7 3/4	7 7/8	8

FLEXFIT DELTA

S/M:	6 3/8	6 1/2	6 5/8	6 3/4	6 7/8	7	7 1/8	7 1/4	7 3/8	7 1/2	7 5/8	7 3/4	7 7/8	8
L/XL:	6 3/8	6 1/2	6 5/8	6 3/4	6 7/8	7	7 1/8	7 1/4	7 3/8	7 1/2	7 5/8	7 3/4	7 7/8	8

FLEXFIT

OSFA:	6 3/8	6 1/2	6 5/8	6 3/4	6 7/8	7	7 1/8	7 1/4	7 3/8	7 1/2	7 5/8	7 3/4	7 7/8	8
YOUTH:	6 3/8	6 1/2	6 5/8	6 3/4	6 7/8	7	7 1/8	7 1/4	7 3/8	7 1/2	7 5/8	7 3/4	7 7/8	8
XS:	6 3/8	6 1/2	6 5/8	6 3/4	6 7/8	7	7 1/8	7 1/4	7 3/8	7 1/2	7 5/8	7 3/4	7 7/8	8
S/M:	6 3/8	6 1/2	6 5/8	6 3/4	6 7/8	7	7 1/8	7 1/4	7 3/8	7 1/2	7 5/8	7 3/4	7 7/8	8
L/XL:	6 3/8	6 1/2	6 5/8	6 3/4	6 7/8	7	7 1/8	7 1/4	7 3/8	7 1/2	7 5/8	7 3/4	7 7/8	8
XXL:	6 3/8	6 1/2	6 5/8	6 3/4	6 7/8	7	7 1/8	7 1/4	7 3/8	7 1/2	7 5/8	7 3/4	7 7/8	8

HEAD SIZE

INCHES	20	20 3/8	20 3/4	21 1/4	21 5/8	22	22 3/8	22 3/4	23 1/8	23 1/2	23 7/8	24 1/4	24 5/8	25
CM	51	52	53	54	55	56	57	58	59	60	61	62	63	64
SIZES	6 3/8	6 1/2	6 5/8	6 3/4	6 7/8	7	7 1/8	7 1/4	7 3/8	7 1/2	7 5/8	7 3/4	7 7/8	8

ONE TEN FLEXFIT

OSFA:	6 3/8	6 1/2	6 5/8	6 3/4	6 7/8	7	7 1/8	7 1/4	7 3/8	7 1/2	7 5/8	7 3/4	7 7/8	8
-------	-------	-------	-------	-------	-------	---	-------	-------	-------	-------	-------	-------	-------	---

TWO TEN

YOUTH:	6 3/8	6 1/2	6 5/8	6 3/4	6 7/8	7	7 1/8	7 1/4	7 3/8	7 1/2	7 5/8	7 3/4	7 7/8	8
S/M:	6 3/8	6 1/2	6 5/8	6 3/4	6 7/8	7	7 1/8	7 1/4	7 3/8	7 1/2	7 5/8	7 3/4	7 7/8	8
L/XL:	6 3/8	6 1/2	6 5/8	6 3/4	6 7/8	7	7 1/8	7 1/4	7 3/8	7 1/2	7 5/8	7 3/4	7 7/8	8
XXL:	6 3/8	6 1/2	6 5/8	6 3/4	6 7/8	7	7 1/8	7 1/4	7 3/8	7 1/2	7 5/8	7 3/4	7 7/8	8

ADJUSTABLE

OSFA:	6 3/8	6 1/2	6 5/8	6 3/4	6 7/8	7	7 1/8	7 1/4	7 3/8	7 1/2	7 5/8	7 3/4	7 7/8	8
-------	-------	-------	-------	-------	-------	---	-------	-------	-------	-------	-------	-------	-------	---

*This chart is for general use only. Please refer to each style for most accurate sizing info.





110 FITTED SNAPBACK

ARTICLE NO: 110

SIZES: OSFA (ONE SIZE FITS ALL)

MATERIAL: 83% ACRYLIC, 15% WOOL, 2% POLYURETHANE ELASTANE

19,90 EUR
SUGG. RETAIL PRICE



RED



RED/BLACK



BLACK/RED



BLACK



BLACK/GREY



DARKGREY



WHITE



WHITE/BLACK





ONE TEN



BLACK

19,90 EUR
SUGG. RETAIL PRICE



16000790

110 COOL & DRY MINI PIQUE

110P :ARTICLE NO

(ONE SIZE FITS ALL) **OSFA** :SIZES

100% POLYESTER :MATERIAL



BLACK



NAVY



RED



ROYAL



WHITE



SILVER

ONE TEN



FLEXFIT DELTA

THE DELTA SYMBOL (Δ) IS COMMONLY USED IN SUBJECTS OF SCIENCE AND MATHEMATICS, OFTEN TO DESCRIBE CHANGE.

CONSTRUCTION

SEAMLESS

MATERIAL

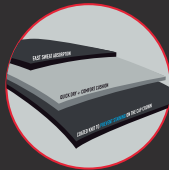
HIGH-TECH AND LIGHT
WATER RESISTANT

EYELETS

LASER CUT OR SEWN EYELETS

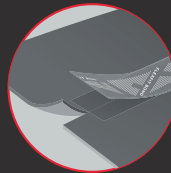
SWEATBAND

3 LAYER, HIGH-TECH CONSTRUCTION



FLEXFIT BOND TAPING

ODOR REPELLENT
THERMAL REGULATION
ANTIBACTERIAL



VISOR

LIGHTER VISOR FABRICATION
REDUCED FRONT HEAVINESS

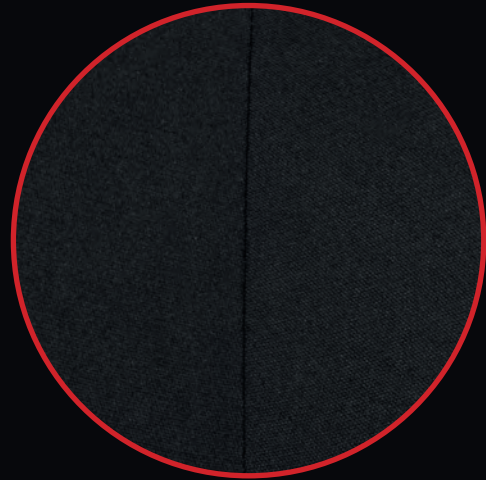
TYPICAL CAP



- HEAVY STITCHING
- CONVENTIONAL
- UNSIGHTLY



"SEAMLESS" FLEXFIT DELTA



- SEW-FREE FINISH ON ALL PANELS
- LASER CUT OR SEWN EYELETS
- HIGH-TECH, MINIMAL AND LIGHT
- WATER RESISTANT

POLYESTER/PERFORMANCE FABRIC ONLY



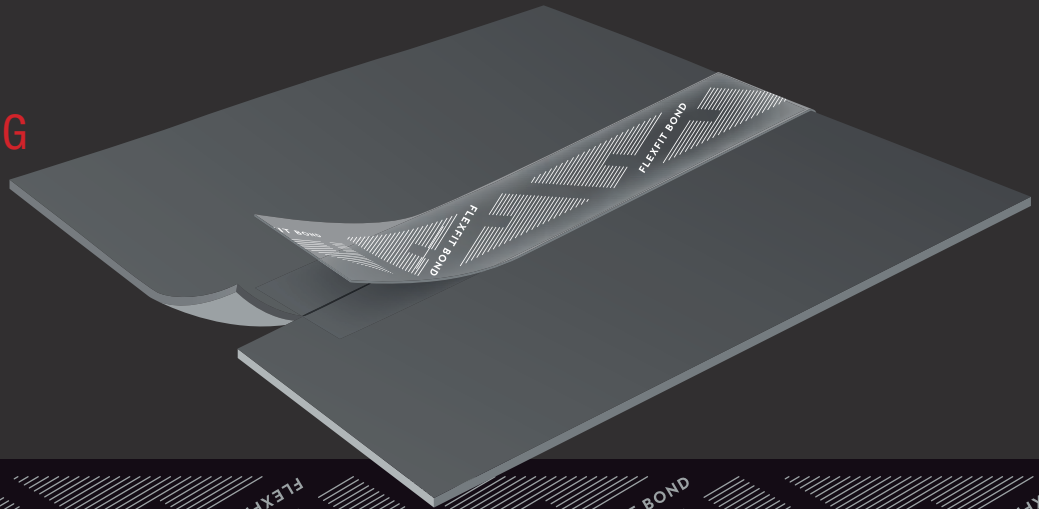


VISOR STICKER

- FINE MATTE FINISH
- MINIMAL BRANDING
- REINFORCING FLEXFIT DELTA IDENTITY

FLEXFIT BOND TAPING

- SEAM SEALED
- LIGHTWEIGHT
- REDUCED STITCHING
- ODOR REPELLENT
- THERMAL REGULATION
- ANTI-BACTERIAL



VISIT [FLEXFIT-EUROPE.COM](https://www.flexfit-europe.com) FOR MORE INFORMATION

FLEXFIT





29,90 EUR
SUGG. RETAIL PRICE



16001190

FLEXFIT DELTA

180 :ARTICLE NO

S/M L/XL :SIZES

92% POLYESTER, 8% ELASTANE :MATERIAL

FLEXFIT



BLACK



NAVY



RED



SILVER



WHITE

FLEXFIT



14,90 EUR

SUGG. RETAIL PRICE



16000590

FLEXFIT PINSTRIPE

6195P :ARTICLE NO

S/M L/XL :SIZES

97% POLYESTER, 3% ELASTANE :MATERIAL

FLEXFIT



DARKGREY/WHITE



BROWN/WHITE



WHITE/BLACK



NAVY/WHITE



BLACK/WHITE

FLEXFIT GLEN CHECK

ARTICLE NO: 6196

SIZES: **S/M** **L/XL**

MATERIAL: 97% POLYESTER, 3% ELASTANE

14,90 EUR

SUGG. RETAIL PRICE



16000590



BLACK/WHITE



BROWN/KHAKI

FLEXFIT



FLEXFIT



14,90 EUR
SUGG. RETAIL PRICE



16000590

FLEXFIT TARTAN PLAID

6197 :ARTICLE NO

S/M L/XL :SIZES

64% POLYESTER, 34% RAYON, 2% ELASTANE :MATERIAL



BLACK/GREY



BLACK/RED

FLEXFIT

LOW PROFILE CORDUROY DAD CAP

ARTICLE NO: **6245CD**

SIZES: **OSFA** (ONE SIZE FITS ALL)

MATERIAL: 100% COTTON

19,90 EUR
SUGG. RETAIL PRICE



FLEXFIT



BLACK



KHAKI



FLEXFIT



NAVY

NEW





14,90 EUR
SUGG. RETAIL PRICE



LOW PROFILE COTTON TWILL

6245CM ARTICLE NO

KIDS **OSFA** (ONE SIZE FITS ALL) SIZES
100% COTTON MATERIAL



BLACK



NAVY



KHAKI



WHITE



DARKGREY*



MAROON*



PINK*



RED*



SILVER*



BUCK*



CURRY*



TAN*



CRANBERRY



LIGHTBLUE



STONE

THE CLASSICS

* COLOR NOT AVAILABLE IN KIDS



19,90 EUR
SUGG. RETAIL PRICE



16000850



WOOD CAMO



NEW COLOR

RETRO DESERT CAMO



SILVER CAMO



NEW COLOR

DESERT CAMO

LOW PROFILE CAMO WASHED CAP

6245CW :ARTICLE NO

(ONE SIZE FITS ALL) **OSFA** :SIZES

98% COTTON, 2% ELASTANE :MATERIAL

THE CLASSICS

LOW PROFILE DESTROYED CAP

ARTICLE NO: 6245DC

SIZES: OSFA (ONE SIZE FITS ALL)

MATERIAL: 100% COTTON

19,90 EUR
SUGG. RETAIL PRICE



BLACK



DARKGREY



MAROON



NAVY



PINK



RED



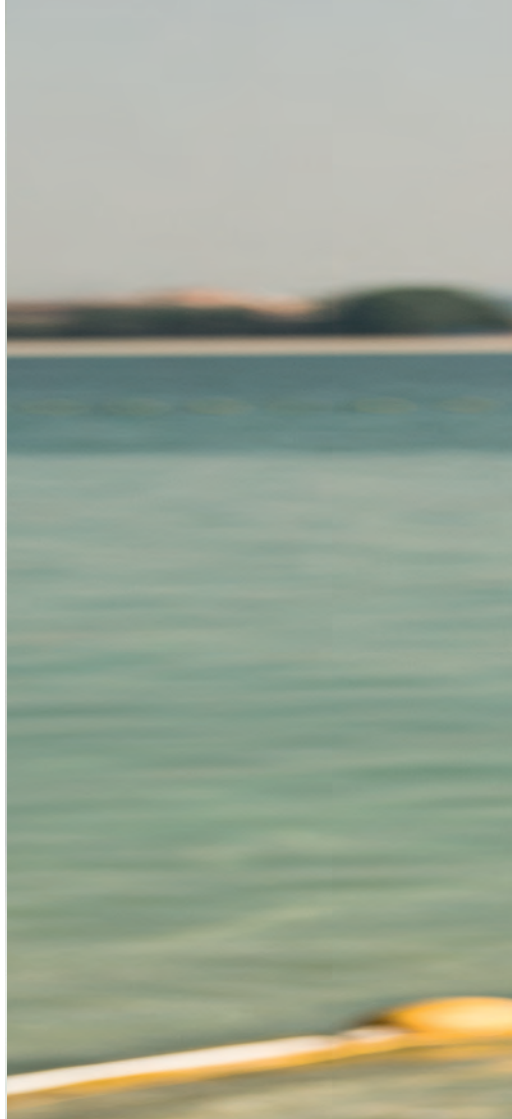
WHITE



KHAKI



BUCK





HONEYCOMB DAD CAP

ARTICLE NO: **6245HC**

SIZES: **OSFA** (ONE SIZE FITS ALL)

MATERIAL: 63% POLYESTER, 34% COTTON, 3% ELASTANE

19,90 EUR
SUGG. RETAIL PRICE



BLACK



FLEXFIT



FLEXFIT

BLACK

NEW


THE CLASSICS



NEW



DARKGREY

19,90 EUR
SUGG. RETAIL PRICE



LOW PROFILE MELTON WOOL DAD CAP

6245MW :ARTICLE NO

(ONE SIZE FITS ALL) **OSFA** :SIZES

50% WOOL, 30% POLYESTER, 20% NYLON :MATERIAL



BLACK



HEATHER GREY

THE CLASSICS



NEW



MAROON

16,90 EUR
SUGG. RETAIL PRICE



PEACHED COTTON TWILL DAD CAP

6245PT :ARTICLE NO

(ONE SIZE FITS ALL) **OSFA** :SIZES

100% COTTON :MATERIAL



BLACK



DIAMOND BLUE



LIGHTGREY



LODEN



WHITE



YELLOW

THE CLASSICS



NEW



GOLD



19,90 EUR
SUGG. RETAIL PRICE



16000850

LOW PROFILE SATIN CAP

6245SC :ARTICLE NO

(ONE SIZE FITS ALL) **OSFA** :SIZES

100% POLYESTER :MATERIAL



BLACK



GOLD



SILVER



WHITE



LIGHTPINK



BABYBLUE



19,90 EUR
SUGG. RETAIL PRICE



16000850

LOW PROFILE VELOURS CAP

6245VC :ARTICLE NO

(ONE SIZE FITS ALL) **OSFA** :SIZES

100% POLYESTER :MATERIAL



BLACK



SAND



LIGHTROSE



19,90 EUR
SUGG. RETAIL PRICE



16000850

LOW PROFILE WASHED CAP

6245W :ARTICLE NO

(ONE SIZE FITS ALL) **OSFA** :SIZES

65% COTTON, 35% NYLON :MATERIAL



BEIGE



BLUE



PINK

LOW PROFILE WATER REPELLENT CAP

ARTICLE NO: **6245WR**

SIZES: **OSFA** (ONE SIZE FITS ALL)

MATERIAL: 70% COTTON, 30% NYLON

19,90 EUR
SUGG. RETAIL PRICE



BLACK



BLUE



ELEPHANT



MAROON



NAVY



BUCK



YELLOWBEAN



IVORY



FLEXFIT WOOLY COMBED

14,90 EUR
SUGG. RETAIL PRICE

ARTICLE NO: **6277**

SIZES: **YOUTH XS/S S/M L/XL XXL**

MATERIAL: 63% POLYESTER, 34% COTTON, 3% ELASTANE



16000590

FLEXFIT



DARK GREY



SILVER



GREY



BLACK



PEPPER GREEN



FRESH GREEN



HAWAIIAN OCEAN



ROYAL



WHITE



MAROON



RED



ORANGE



BROWN



PURPLE



OLIVE



KHAKI



DARK NAVY



CAROLINA BLUE



NAVY



SPRUCE



BLACK/BLACK



GOLD



PINK



STONE



CURRY



FLEXFIT



19,90 EUR
SUGG. RETAIL PRICE



CARBON FLEXFIT

6277CA :ARTICLE NO

S/M L/XL :SIZES

63% POLYESTER, 34% COTTON, 3% ELASTANE :MATERIAL

FLEXFIT



BLACK/CARBON

FLEXFIT



19,90 EUR
SUGG. RETAIL PRICE



BLACK

FINE MELANGE FLEXFIT

6277FM :ARTICLE NO

S/M L/XL :SIZES

62% POLYESTER, 35% VISCOSE, 3% ELASTANE :MATERIAL

FLEXFIT

FLEXFIT FLAT VISOR

ARTICLE NO: 6277FV

SIZES: S/M L/XL

MATERIAL: 63% POLYESTER, 34% COTTON, 3% ELASTANE

16,90^{EUR}
SUGG. RETAIL PRICE



DARKGREY



MAROON



NAVY



HEATHER



FLEXFIT

FLEXFIT



BLACK



HERINGBONE MELANGE FLEXFIT

ARTICLE NO: 6277HM

SIZES: **S/M** **L/XL**

MATERIAL: 80% POLYESTER, 20% VISCOSE

19,90 EUR
SUGG. RETAIL PRICE



14000850

FLEXFIT



BLACK/H.GREY



FLEXFIT

FLEXFIT



19,90 EUR
SUGG. RETAIL PRICE



16000850

FLEXFIT JACQUARD KNIT

6277JK :ARTICLE NO

S/M L/XL :SIZES

100% POLYESTER :MATERIAL

FLEXFIT



BLUE



GREY

LOW PROFILE LIGHT WOOLY CAP

ARTICLE NO: 6277LW

SIZES: S/M L/XL

MATERIAL: 63% POLYESTER, 34% VISCOSE, 3% ELASTANE

16,90^{EUR}
SUGG. RETAIL PRICE



16000690



BLACK

FLEXFIT



MELANGE FLEXFIT

ARTICLE NO: 6277ML

SIZES: S/M L/XL

MATERIAL: 66% VISCOSE 31% POLYESTER 3% ELASTANE

19,90^{EUR}
SUGG. RETAIL PRICE



FLEXFIT



BLACK



BURGUNDY



NAVY





FLEXFIT



19,90 EUR
SUGG. RETAIL PRICE



16000850

FLEXFIT PASTEL MELANGE CAP

6277MS :ARTICLE NO

YOUTH XS/S S/M L/XL XXL :SIZES

100% POLYESTER :MATERIAL

FLEXFIT



YELLOWCREAM



BALLADBLUE



WHISPERPINK



SUPERGREY



PEACH

PLAIN SPAN FLEXFIT

ARTICLE NO: **6277PS**

SIZES: **S/M L/XL**

MATERIAL: 62% POLYESTER, 35% VISCOSE, 3% ELASTANE

19,90 EUR
SUGG. RETAIL PRICE



HEATHER GREY





THE ORIGINAL
FLEXFIT
XL
IT FITS YOUR LIFE

DIAMOND QUILTED FLEXFIT

ARTICLE NO: 6277Q

SIZES: YOUTH S/M L/XL

MATERIAL: 63% POLYESTER, 34% COTTON, 3% ELASTANE

19,90^{EUR}
SUGG. RETAIL PRICE



FLEXFIT



BLACK





FLEXFIT

FLEXFIT



19,90 EUR

SUGG. RETAIL PRICE



14000850

STRIPES MELANGE FLEXFIT

6277SM :ARTICLE NO

S/M L/XL :SIZES

74% POLYESTER, 22% VISCOSE, 4% ELASTANE :MATERIAL



BLACK/H.GREY

FLEXFIT

TECH FLEXFIT

ARTICLE NO: 6277TF

SIZES: S/M L/XL

MATERIAL: 97% POLYESTER, 3% ELASTANE

19,90^{EUR}
SUGG. RETAIL PRICE



16000850



WHITE



SILVER



BLACK



FLEXFIT



NAVY

NEW





19,90 EUR
SUGG. RETAIL PRICE



TWILL KNIT FLEXFIT

6277TK :ARTICLE NO

S/M L/XL :SIZES

66% POLYESTER, 30% COTTON, 4% ELASTANE :MATERIAL



GREY

FLEXFIT

UNSTRUCTURED TECH FLEXFIT

ARTICLE NO: 6277UT

SIZES: S/M L/XL

MATERIAL: 97% POLYESTER, 3% ELASTANE

19,90^{EUR}
SUGG. RETAIL PRICE



FLEXFIT



BLACK



NAVY



WHITE





SILVER



FLEXFIT MELANGE CAP

ARTICLE NO: 6355

SIZES: **S/M** **L/XL**

MATERIAL: 98% POLYESTER, 2% ELASTANE

19,90 EUR
SUGG. RETAIL PRICE



16000850



LIGHT HEATHERGREY





DARK HEATHERGREY





14,90 EUR
SUGG. RETAIL PRICE



BRUSHED COTTON TWILL MID-PROFILE

6363V :ARTICLE NO

(ONE SIZE FITS ALL) **OSFA** :SIZES

100% COTTON :MATERIAL



BLACK



KHAKI



NAVY



RED

FLEXFIT 5 PANEL

ARTICLE NO: 6560

SIZES: **S/M** **L/XL**

MATERIAL: 97% POLYESTER, 3% ELASTANE

14,90 EUR
SUGG. RETAIL PRICE



16000590

FLEXFIT



WHITE



RED



NAVY



BLACK



KHAKI





FLEXFIT

FLEXFIT PERFORMANCE

ARTICLE NO: 6580W

SIZES: **S/M** **L/XL**

MATERIAL: 97% POLYESTER, 3% ELASTANE

16,90 EUR
SUGG. RETAIL PRICE



FLEXFIT



BLACK/WHITE



RED/WHITE



NAVY/WHITE



ROYAL/WHITE





FLEXFIT

FLEXFIT



19,90 EUR
SUGG. RETAIL PRICE



FLEXFIT BAMBOO

6588 :ARTICLE NO

S/M L/XL :SIZES

59% BAMBOO, 38% COTTON, 3% ELASTANE :MATERIAL

FLEXFIT



BLACK

FLEXFIT COTTON TWILL DAD CAP

ARTICLE NO: 6745

SIZES: **S/M** **L/XL**

MATERIAL: 98% COTTON, 2% ELASTANE

19,90 EUR
SUGG. RETAIL PRICE



FLEXFIT



BLACK



PINK



WHITE



KHAKI



FLEXFIT



DARKGREY

NEW



FLEXFIT ATHLETIC MESH

ARTICLE NO: 6777

SIZES: OSFA (ONE SIZE FITS ALL)

MATERIAL: 97% POLYESTER, 3% ELASTANE

19,90 EUR
SUGG. RETAIL PRICE



16000850

FLEXFIT



BLACK



NAVY



WHITE



SILVER







14,90 EUR
SUGG. RETAIL PRICE



FLEXFIT DOUBLE JERSEY

6778 :ARTICLE NO

S/M L/XL :SIZES

63% POLYESTER, 34% COTTON, 3% ELASTANE :MATERIAL

FLEXFIT



NAVY



BLACK



ROYAL



HEATHER



RED





FLEXFIT



14,90 EUR
SUGG. RETAIL PRICE



FLEXFIT DOUBLE JERSEY 2-TONE

6778T :ARTICLE NO

S/M L/XL :SIZES

63% POLYESTER, 34% COTTON, 3% ELASTANE :MATERIAL

FLEXFIT



GREY/BLACK

FLEXFIT GARMENT WASHED CAMO

ARTICLE NO: **6977CA**

SIZES: **S/M L/XL**

MATERIAL: 98% COTTON, 2% ELASTANE

19,90 EUR
SUGG. RETAIL PRICE



FLEXFIT



GREEN CAMO





FLEXFIT



19,90 EUR
SUGG. RETAIL PRICE



FLEXFIT GARMENT WASHED COTTON DAD HAT

6997 :ARTICLE NO

S/M L/XL :SIZES

98% COTTON, 2% ELASTANE :MATERIAL

FLEXFIT



BLACK



KHAKI



LIGHTBLUE



MAROON



NAVY



PINK



LODEN



WHITE

CURVED CLASSIC SNAPBACK

ARTICLE NO: 7706

SIZES: OSFA (ONE SIZE FITS ALL)

MATERIAL: 60% COTTON, 40% POLYESTER

14,90 EUR
SUGG. RETAIL PRICE



BLACK



NAVY



PINK



RED



WHITE





THE CLASSICS

CHARCOAL

CURVED BANDANA TIE SNAPBACK

ARTICLE NO: 7706BS

SIZES: OSFA (ONE SIZE FITS ALL)

MATERIAL: 60% COTTON, 40% POLYESTER

19,90 EUR
SUGG. RETAIL PRICE



WHITE/WHITE



FLEXFIT



BLACK/BLACK

NEW





16,90 EUR
SUGG. RETAIL PRICE



16000690

110 VISOR

8110 :ARTICLE NO

(ONE SIZE FITS ALL) OSFA :SIZES

97% POLYESTER, 3% ELASTANE :MATERIAL



BLACK



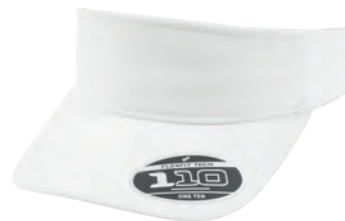
NAVY



RED



ROYAL



WHITE

ONE TEN





14,90 EUR
SUGG. RETAIL PRICE



CLASSIC 5 PANEL SNAPBACK

6007 :ARTICLE NO

(ONE SIZE FITS ALL) OSFA :SIZES

100% COTTON :MATERIAL



BLACK



WHITE



RED



NAVY



ROYAL

CLASSIC 5 PANEL SNAPBACK

ARTICLE NO: 6007T

SIZES: OSFA (ONE SIZE FITS ALL)

MATERIAL: 100% COTTON

14,90^{EUR}
SUGG. RETAIL PRICE



BLACK/RED



NAVY/RED



BLACK/SILVER





BANDANA TIE SNAPBACK

ARTICLE NO: **6089BS**

SIZES: **OSFA** (ONE SIZE FITS ALL)

MATERIAL: 80% ACRYLIC, 20% WOOL

19,90 EUR
SUGG. RETAIL PRICE



16000850



WHITE/WHITE



FLEXFIT



BLACK/BLACK

NEW



CARBON SNAPBACK

ARTICLE NO: **6089CA**

SIZES: **OSFA** (ONE SIZE FITS ALL)

MATERIAL: 80% ACRYLIC, 20% WOOL

19,90 EUR
SUGG. RETAIL PRICE



BLACK/CARBON

THE CLASSICS



THE CLASSICS

CHAMBRAY-SUEDE SNAPBACK

ARTICLE NO: **6089CH**

SIZES: **OSFA** (ONE SIZE FITS ALL)

MATERIAL: 80% ACRYLIC, 20% WOOL

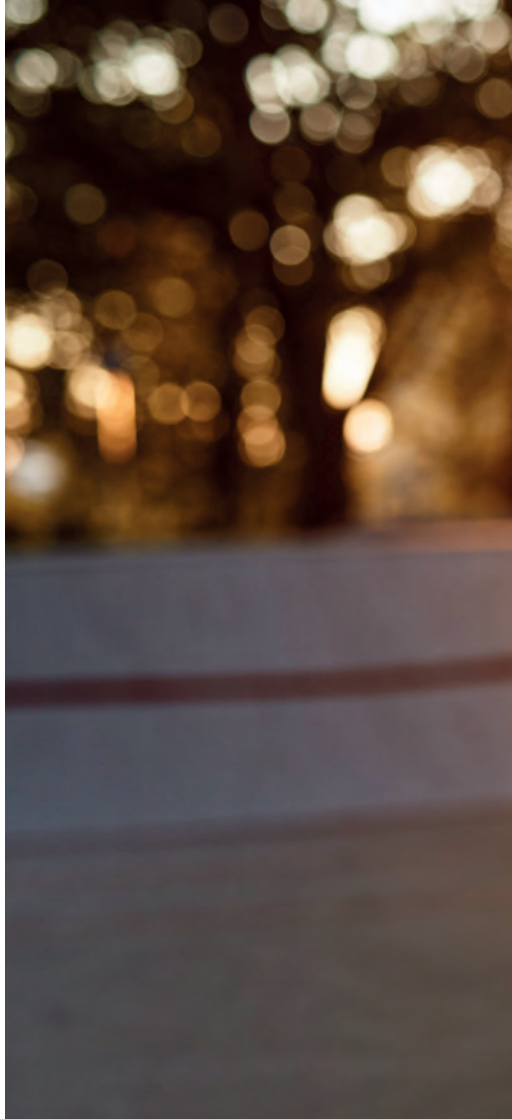
19,90 EUR
SUGG. RETAIL PRICE



BLACK/BLACK



BLUE/BEIGE





CORK SNAPBACK

ARTICLE NO: **6089CO**

SIZES: **OSFA** (ONE SIZE FITS ALL)

MATERIAL: 80% ACRYLIC, 20% WOOL

24,90 EUR
SUGG. RETAIL PRICE



BLACK



NATURAL





THE CLASSICS

CAMO VISOR SNAPBACK

ARTICLE NO: 6089CV

SIZES: OSFA (ONE SIZE FITS ALL)

MATERIAL: 80% ACRYLIC, 20% WOOL

24,90 EUR
SUGG. RETAIL PRICE



BLACK CAMO



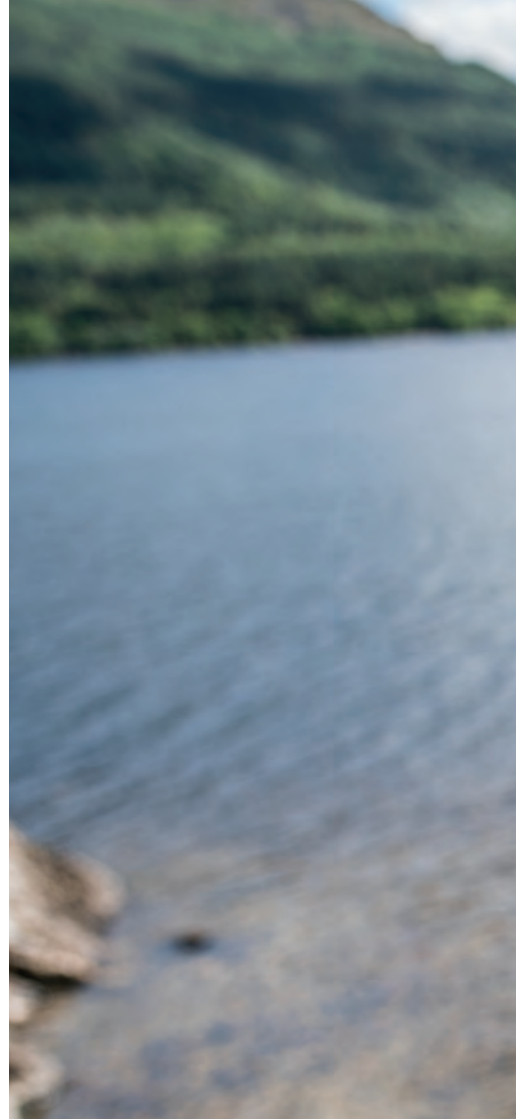
NAVY CAMO



OLIVE CAMO



SILVER CAMO





REVEREND
SINCE 1984

THE CLASSICS





19,90 EUR
SUGG. RETAIL PRICE



FLORAL SNAPBACK

6089F :ARTICLE NO

(ONE SIZE FITS ALL) OSFA :SIZES

80% ACRYLIC, 20% WOOL :MATERIAL



MINT



RED

THE CLASSICS





24,90 EUR
SUGG. RETAIL PRICE



FULL LEATHER IMITATION SNAPBACK

6089FL :ARTICLE NO

(ONE SIZE FITS ALL) **OSFA** :SIZES

100% POLYURETHANE :MATERIAL



BLACK/BLACK

THE CLASSICS

HAWAIIAN SNAPBACK

ARTICLE NO: 6089HW

SIZES: OSFA (ONE SIZE FITS ALL)

MATERIAL: 80% ACRYLIC, 20% WOOL

19,90^{EUR}
SUGG. RETAIL PRICE



BLACK/RED



BLACK/AQUA





CLASSIC SNAPBACK

14,90 EUR
SUGG. RETAIL PRICE



ARTICLE NO: **6089M**

SIZES: **KIDS OSFA** (ONE SIZE FITS ALL)

MATERIAL: 80% ACRYLIC, 20% WOOL



SILVER*



DARKGREY*



DARK NAVY



SPRUCE*



NAVY*



RED*



MAROON



BLACK



HEATHER



PURPLE*



ROYAL*



NATURAL*



HEATHER/HEATHER*



BLACK/BLACK*



DARKGREY/DARKGREY*



DARKNAVY/DARKNAVY*



RED/RED*



NEW COLOR

BROWN*



NEW COLOR

BUCK*



NEW COLOR

TAN*



MAROON/MAROON*

THE CLASSICS





14,90 EUR
SUGG. RETAIL PRICE



CLASSIC SNAPBACK 2-TONE

6089MT :ARTICLE NO

(ONE SIZE FITS ALL) OSFA :SIZES

80% ACRYLIC, 20% WOOL :MATERIAL



BLACK/NEONYELLOW



BLACK/SILVER



BLACK/NEONORANGE



BLACK/NEONPINK



H.GREY/MAROON



BLACK/RED



NAVY/MAROON



NATURAL/BLACK



NAVY/RED



PURPLE/GOLD



BLACK/TEAL



BLACK/PURPLE



MAROON/BLACK



H.GREY/BLACK



ROYAL/ORANGE



OLIVE/BLACK



RED/BLACK



H.GREY/NAVY



H.GREY/RED



H.GREY/ROYAL



CHARCOAL/BLACK

THE CLASSICS

MELANGE 2-TONE SNAPBACK

ARTICLE NO: 6089ML

SIZES: OSFA (ONE SIZE FITS ALL)

MATERIAL: 100% POLYESTER

24,90 EUR
SUGG. RETAIL PRICE



16001090



RED/BLACK

THE CLASSICS



THE CLASSICS



YUPO



THE CLASSICS

SNAPBACK

LONG SINCE 1874



19,90 EUR
SUGG. RETAIL PRICE



16000850

PAINTED VISOR SNAPBACK

6089PV :ARTICLE NO

(ONE SIZE FITS ALL) **OSFA** :SIZES

80% ACRYLIC, 20% WOOL :MATERIAL



BLACK/WHITE

THE CLASSICS



THE CLASSICS
of
SNAPBACK
YUPOONG SINCE 1974



DIAMOND QUILTED SNAPBACK

ARTICLE NO: **6089Q**

SIZES: **OSFA** (ONE SIZE FITS ALL)

MATERIAL: 80% ACRYLIC, 20% WOOL

19,90 EUR
SUGG. RETAIL PRICE



BLACK









19,90 EUR
SUGG. RETAIL PRICE



ROSES SNAPBACK

6089R :ARTICLE NO

(ONE SIZE FITS ALL) **OSFA** :SIZES

80% ACRYLIC, 20% WOOL :MATERIAL



BLACK/RED



BLACK/GREY



19,90 EUR
SUGG. RETAIL PRICE



STRIPES MELANGE CROWN SNAPBACK

6089SC :ARTICLE NO

(ONE SIZE FITS ALL) **OSFA** :SIZES

74% POLYESTER, 22% VISCOSE, 4% ELASTANE :MATERIAL



BLACK/GREY

THE CLASSICS

SUNSET PEAK SNAPBACK

ARTICLE NO: 6089SP

SIZES: OSFA (ONE SIZE FITS ALL)

MATERIAL: 80% ACRYLIC, 20% WOOL

19,90^{EUR}
SUGG. RETAIL PRICE



BLACK



THE CLASSICS

WATER REPELLANT SNAPBACK

ARTICLE NO: **6089WR**

SIZES: **OSFA** (ONE SIZE FITS ALL)

MATERIAL: 70% COTTON, 30% NYLON

19,90 EUR
SUGG. RETAIL PRICE



16000850

FLEXFIT



BLACK



IVORY



FLEXFIT



BUCK

NEW







THE HISTORY OF
SNAPBACK
UPDONG SINCE 1974

PREMIUM 210 FITTED

19,90 EUR
SUGG. RETAIL PRICE

ARTICLE NO: **6210**

SIZES: **S/M L/XL**



MATERIAL: 83% ACRYLIC, 15% WOOL, 2% ELASTANE | WHITE: 98% ACRYLIC, 2% ELASTANE



DARK NAVY



BLACK



DARK GREY



HEATHER



RED



BROWN



ROYAL



WHITE



210 FITTED



210 FITTED

210 FITTED



19,90 EUR

SUGG. RETAIL PRICE



16000690

PREMIUM 210 FITTED 2-TONE

6210T :ARTICLE NO

S/M L/XL :SIZES

83% ACRYLIC, 15% WOOL, 2% ELASTANE / WHITE: 98% ACRYLIC, 2% ELASTANE :MATERIAL



BLACK/GREY



WHITE/BLACK



RED/BLACK



BLACK/RED

210 FITTED

UNSTRUCTURED 5-PANEL SNAPBACK

ARTICLE NO: 6502

SIZES: OSFA (ONE SIZE FITS ALL)

MATERIAL: 80% ACRYLIC, 20% WOOL

14,90 EUR
SUGG. RETAIL PRICE



BLACK



CHARCOAL



MAROON



NAVY



RED



WHITE



KHAKI



CHARCOAL

PREMIUM CORDUROY SNAPBACK

ARTICLE NO: 6508

SIZES: OSFA (ONE SIZE FITS ALL)

MATERIAL: 100% COTTON

19,90 EUR
SUGG. RETAIL PRICE



FLEXFIT



BLACK



GREY



KHAKI





FLEXFIT

NAVY

MELTON WOOL SNAPBACK

19,90 EUR
SUGG. RETAIL PRICE

ARTICLE NO: **6689M**

SIZES: **OSFA** (ONE SIZE FITS ALL)

MATERIAL: 50% WOOL, 30% POLYESTER, 20% NYLON



BLACK



DARKGREY



HEATHER GREY



NAVY



WHITE







URBAN CLASSICS

URB



FLEXFIT COTTON TWILL BUCKET HAT

ARTICLE NO: 5003

SIZES: OSFA (ONE SIZE FITS ALL)

MATERIAL: 98% COTTON, 2% ELASTANE

19,90 EUR
SUGG. RETAIL PRICE



BLACK



KHAKI



GREY



NAVY



RED



WHITE







9,90 EUR
SUGG. RETAIL PRICE



HEAVYWEIGHT LONG BEANIE

1501KC :ARTICLE NO

(ONE SIZE FITS ALL) OSFA :SIZES

100% HYPOALLERGENIC ACRYLIC :MATERIAL



RED



MAROON



NAVY



BLACK



CL BLUE



BABY PINK



SPRUCE



BLAZE ORANGE



ROYAL



BROWN



OLIVE



PURPLE



GOLD



CHARCOAL



HEATHER GREY



WHITE

HEAVYWEIGHT BEANIE

ARTICLE NO: 1500KC

SIZES: OSFA (ONE SIZE FITS ALL)

MATERIAL: 100% HYPOALLERGENIC ACRYLIC

7,90 EUR

SUGG. RETAIL PRICE



16000280



RED



MAROON



NAVY



BLACK



CL. BLUE



BABY PINK



SPRUCE



BLAZE ORANGE



ROYAL



BROWN



OLIVE



PURPLE



GOLD



CHARCOAL



HEATHER GREY



WHITE



URBAN CLASSICS

CLASSIC JOCKEY CAP

ARTICLE NO: 7005

SIZES: OSFA (ONE SIZE FITS ALL)

MATERIAL: 100% COTTON

14,90 EUR
SUGG. RETAIL PRICE



OLIVE



KHAKI



BLACK



DARKGREY



CAMO



NAVY



RED





FOAM TRUCKER

ARTICLE NO: 6005FF

SIZES: OSFA (ONE SIZE FITS ALL)

MATERIAL: 60% COTTON, 40% POLYESTER

9,90 EUR
SUGG. RETAIL PRICE



BLACK



NAVY



RED



ROYAL



WHITE





THE CLASSICS

THE CLASSICS



NEW



9,90 EUR
SUGG. RETAIL PRICE



FOAM TRUCKER WITH WHITE FRONT

6005FW :ARTICLE NO

(ONE SIZE FITS ALL) **OSFA** :SIZES

60% COTTON, 40% POLYESTER :MATERIAL



BLACK/WHITE/BLACK



BLACK/WHITE/RED



NAVY/WHITE/NAVY



RED/WHITE/BLACK



RED/WHITE/RED



ROYAL/WHITE/ROYAL

THE CLASSICS

CLASSIC TRUCKER

ARTICLE NO: 6006

SIZES: OSFA (ONE SIZE FITS ALL)

MATERIAL: 47% COTTON, 28% NYLON, 25% POLYESTER

9,90 EUR

SUGG. RETAIL PRICE



16000390



NAVY



CHARCOAL



BLACK



WHITE

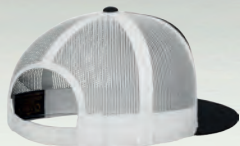
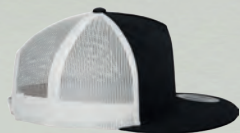




THE CLASSICS



THE CLASSICS



9,90 EUR
SUGG. RETAIL PRICE



CLASSIC TRUCKER 2-TONE

6006T :ARTICLE NO

(ONE SIZE FITS ALL) **OSFA** :SIZES

47% COTTON, 28% NYLON, 25% POLYESTER :MATERIAL



BLACK/WHITE

THE CLASSICS

CLASSIC TRUCKER

ARTICLE NO: 6006W

SIZES: OSFA (ONE SIZE FITS ALL)

MATERIAL: 47% COTTON, 28% NYLON, 25% POLYESTER

9,90 EUR

SUGG. RETAIL PRICE



16000390



BLACK/WHITE/BLACK



RED/WHITE/RED



C.BLUE/WHITE/C.BLUE



NAVY/WHITE/NAVY



KELLY/WHITE/KELLY



BROWN/WHITE/BROWN



ROYAL/WHITE/ROYAL





THE CLASSICS

FLEXFIT DRIVER

ARTICLE NO: 9180

SIZES: ONE SIZE

MATERIAL: 97% POLYESTER, 3% ELASTANE

19,90 EUR
SUGG. RETAIL PRICE



16000690

FLEXFIT



KHAKI



OLIVE



LODEN



BLACK





FLEXFIT



H.GREY/NAVY

NEW



19,90 EUR
SUGG. RETAIL PRICE



16000850

FLEXFIT MELANGE MESH

6311 :ARTICLE NO

OSFA :SIZES

92% POLYESTER, 8% ELASTANE :MATERIAL

FLEXFIT



HEATHER/BLACK



HEATHER/WHITE

FLEXFIT





14,90 EUR
SUGG. RETAIL PRICE



BLACK



WHITE



ROYAL*



NAVY*



RED*



NEW COLOR

DARKGREY



NEW COLOR

MAROON



NEW COLOR

RED



NEW COLOR

SILVER



NEW COLOR

BUCK

FLEXFIT MESH TRUCKER

6511 :ARTICLE NO

OSFA S/M L/XL :SIZES

55% POLYESTER, 43% COTTON, 2% ELASTANE :MATERIAL

FLEXFIT

* COLOR NOT AVAILABLE IN OSFA

FLEXFIT



DARKGREY/WHITE/DARKGREY

NEW



16,90 EUR
SUGG. RETAIL PRICE



16000690

FLEXFIT MESH COLORED FRONT

6511CF :ARTICLE NO

S/M L/XL :SIZES

60% COTTON, 40% POLYESTER :MATERIAL

FLEXFIT



RED/WHITE/RED



SILVER/WHITE/SILVER



MAROON/WHITE/MAROON



BUCK/WHITE/BUCK



BLACK/WHITE/BLACK



KHAKI/WHITE/KHAKI

FLEXFIT MESH TRUCKER 2-TONE

ARTICLE NO: 6511T

SIZES: OSFA S/M L/XL

MATERIAL: 55% POLYESTER, 43% COTTON, 2% ELASTANE

14,90 EUR
SUGG. RETAIL PRICE



16000590



BLACK/WHITE



NAVY/WHITE*



PINK/WHITE*



ROYAL/WHITE*



RED/WHITE*



NEW COLOR

DARKGREY/WHITE



NEW COLOR

SILVER/WHITE



NEW COLOR

KHAKI/WHITE



NEW COLOR

BUCK/WHITE







16,90 EUR
SUGG. RETAIL PRICE



FLEXFIT TACTEL MESH

6533 :ARTICLE NO

S/M L/XL :SIZES

42% NYLON, 44% POLYESTER, 7% COTTON, 7% POLYURETHANE ELASTANE :MATERIAL

FLEXFIT



BLACK



NAVY



RED



MAROON



ROYAL



WHITE



PURPLE



GREEN



9,90 EUR
SUGG. RETAIL PRICE



BLACK



NAVY



KHAKI



WHITE

RETRO TRUCKER

6606 :ARTICLE NO

(ONE SIZE FITS ALL) OSFA :SIZES

47% COTTON, 28% NYLON, 25% POLYESTER :MATERIAL

THE CLASSICS

RETRO TRUCKER COLORED FRONT

ARTICLE NO: **6606CF**

SIZES: **OSFA**

MATERIAL: 60% COTTON, 40% POLYESTER

14,90 EUR
SUGG. RETAIL PRICE



RED/WHIT/RED



KHAKI/WHITE/KHAKI



MAROON/WHITE/MAROON



NAVY/WHITE/NAVY



DARKGREY/WHITE/DARKGREY



SILVER/WHITE/SILVER





BLACK/WHITE/BLACK



RETRO TRUCKER 2-TONE

ARTICLE NO: 6606T

SIZES: OSFA (ONE SIZE FITS ALL)

MATERIAL: 47% COTTON, 28% NYLON, 25% POLYESTER

9,90 EUR
SUGG. RETAIL PRICE



BLACK/WHITE



NAVY/WHITE



BROWN/KHAKI



MOSSGREEN/KHAKI



KHAKI/WHITE



DARKGREY/WHITE



SILVER/WHITE



BUCK/WHITE





FLEXFIT MULTI DISPLAY

ARTICLE NO: FF-006

PRICE: 80,00 EUR

- capacity: up to 96 caps (8 caps for each shelf)
- positioning of shelves changeable
- castors for easy maneuverability
- several displays can be locked together
- made of steel
- measurements: 161 x 27,4 x 50 cm (H x W x D)

Colors:

- frame: mat grey
- base plate: black

Scope of delivery:

- 1 display frame
- 1 PVC logo plate

FLEXFIT SLATWALL SHELVES

ARTICLE NO: FF-004

PRICE: 3,00 EUR

- capacity: up to 12 caps
- suitable for all slat walls
- min. order quantity: 12 pcs

FLEXFIT SLATWALL HOOKS

ARTICLE NO: FF-005

PRICE: 2,00 EUR

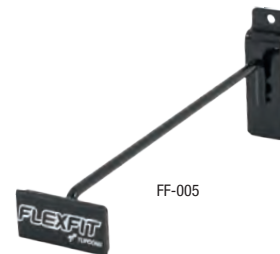
- suitable for all slat walls
- min. order quantity: 5 pcs

FLEXFIT SLATWALL HOOKS

ARTICLE NO: FF-007

PRICE: 10,00 EUR

Measurements: 58 x 24 cm



FF-006

FF-007

FF-004

FF-005



several displays can be locked together



CAP CARRIER

ARTICLE NO: FF-011

MATERIAL: 70% EVA 75, 30% POLYESTER

29,90 EUR
SUGG. RETAIL PRICE



The FLEXFIT Cap Carrier gives cap wearers and collectors the possibility to transport, store and protect up to 6 caps. Made of crush proof EVA material, it is washable but not suitable for tumble drier. 6 eyelets for ventilation ensure a good air circulation. The FLEXFIT Cap Carrier can be opened easily due to the double zip closure. Further it features two metal rings for a convenient attachment to a suitcase or backpack. The rubber-coated handles provide a comfortable grip for the transport. The fine logo branding gives a cool look.



BLACK



CAP WASHER

ARTICLE NO: FF-012

9,90 EUR
SUGG. RETAIL PRICE



The Cap Washer is the ideal solution for cleaning your cap. With Cap Washer you can put caps with a flat visor in your washing machine. Caps with a curved visor can be cleaned in a dishwasher. The Cap Washer makes sure that your cap keeps its shape while being cleaned. Please make sure that your cap is not dry heated at the end of the dishwasher process. The Cap Washer is a must have for anybody who likes wearing caps!



WHITE



CAPRACK 18 SYSTEM

ARTICLE NO: FF-008

MATERIAL: 100% PLASTIC

19,90 EUR
SUGG. RETAIL PRICE



16000850

The CapRack 18 System is the most advanced display, organization and storage system ever developed. Display 6 caps while, at the same time, storing another 12 right behind them for a total of 18 caps. The CapRack 18 System may be hung over a door, on a wall, looped over a closet rod – even hung from the ceiling like a mobile. Ideal for cap wearers and collectors alike, it can be used in the living room, bedroom, den, garage, dorm room – anywhere you want to show off or store your caps. The kit includes 6 clips and a 3-foot cord in black plus mounting hardware. The distance between the caps can be individually adjusted.

BLACK



CAPRACK 36 SYSTEM

ARTICLE NO: FF-009

:MATERIAL 100% PLASTIC

34,90 EUR

SUGG. RETAIL PRICE



16001490

The CapRack 36 System is the most advanced display, organization and storage system ever developed. Display 12 caps while, at the same time, storing another 24 right behind them for a total of 36 caps. The CapRack 36 System may be hung over a door, on a wall, looped over a closet rod – even hung from the ceiling like a mobile. Ideal for cap wearers and collectors alike, it can be used in the living room, bedroom, den, garage, dorm room – anywhere you want to show off or store your caps. The kit includes 12 clips and a 5-foot cord in black plus mounting hardware. The distance between the caps can be individually adjusted.

BLACK



CAPRACK PRO SYSTEM

ARTICLE NO: FF-010

MATERIAL: 100% PLASTIC

29,90 EUR
SUGG. RETAIL PRICE



160001290

The CapRack Pro System is the most advanced display, organization and storage system ever developed. Display 10 caps while, at the same time, storing another 20 right behind them for a total of 30 caps. The CapRack Pro System may be hung over a door, on a wall, looped over a closet rod – even hung from the ceiling like a mobile. Ideal for cap wearers and collectors alike, it can be used in the living room, bedroom, den, garage, dorm room – anywhere you want to show off or store your caps. The kit includes 10 clips and a 5-foot cord in white plus mounting hardware. The distance between the caps can be individually adjusted.

WHITE





OVERSEAS PROGRAM

Flexfit / Yupoong has been the leading headwear manufacturer worldwide for the past 40 years.

We are very confident to declare that we are able to provide the best product with most attentive service in the industry. We have gained our reputation as a top manufacturer of headwear through our innovative and inventive approach towards product, technology and service.

Our custom overseas program has an arsenal of all sorts of cap styles, silhouettes and embellishment techniques. The private label possibilities are endless with a myriad of styles including Flexfits, fitteds, adjustables, snapbacks, and much more.

Service

- R&D: Our in-house design department will assist & provide concept designs for those buyers who require additional assistance in developing headwears.
- REALTIME COMMUNICATION: Our professional staff provide live customer service.

Minimums and lead times

- Minimum order: 576 pcs per style/color
- Proto sample: 3 weeks
- Salesman sample: 4 weeks
- Bulk production: 10-12 weeks upon sample approval

Requirements:

- Cap Style
- Artwork as a vector file (PDF, AI, EPS)
- Artwork position and size
- Technique (2D/3D embroidery/print/patch etc.)

For further information, contact our custom team at custom@flexfit-europe.com



where your imagination meets our needle and thread...

But what if you need the job done fast with a limited run?

That doesn't mean you don't deserve the finest service and highest quality possible. Just ask for our domestic embroidery program.

Even with considerably shorter lead times and smaller minimums, our design work will still meet your exacting specifications, before and after production. Simply forward us your artwork or discuss the design with our embroidery experts, and we'll digitize and produce a sample within days.

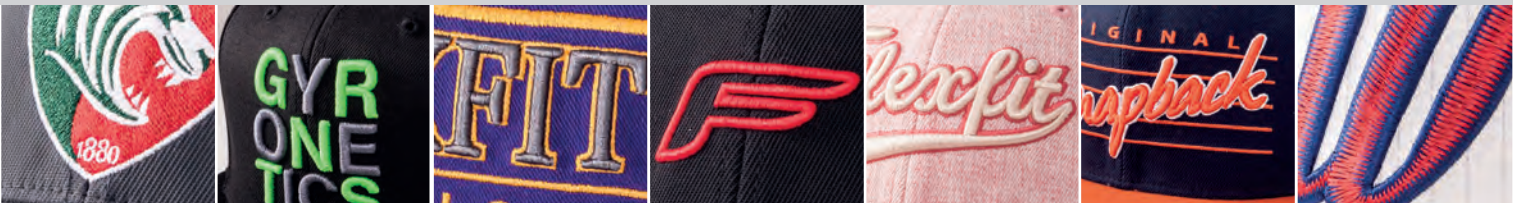
Minimums and lead times

- New orders: 144 pcs per artwork
- Reorders: 72 pcs per artwork
- Proto samples: 10-12 working days
- Bulk production: 14-18 working days upon sample approval

Requirements:

- Cap Style
- Artwork as a vector file (PDF,AI,EPS)
- Artwork position and size
- Embroidery technique 2D or 3D

For further information, contact our custom team at custom@flexfit-europe.com





FLEXFIT EU HUB
TB International GmbH
Dr.-Robert-Murjahn-Str. 7
64372 Ober-Ramstadt
Germany
Tel: +49 (0) 6154 / 574020
Fax: +49 (0) 6154 / 5740230
info@flexfit-europe.com
www.flexfit-europe.com

HEADQUARTERS
YUPOONG
Hans Tower, 34 Gongwon-Ro
Guro-Gu, Guro-dong, 155-838
Seoul, South Korea